



ESCROW MANUAL

REVISION NUMBER	DATE	DESCRIPTION
1.0.0	JULY, 16, 2018	LAUNCH ESCROW MANUAL

# TABLE OF CONTENTS

## CHAPTER 1

### SECTION 1.1 LAYOUT

*SUBSECTION 1.1.A OVERVIEW PAGE*

*SUBSECTION 1.1.B SEND PAGE*

*SUBSECTION 1.1.C ESCROW PAGE*

## CHAPTER 2

### SECTION 2.1 ESCROW USE

*SUBSECTION 2.1.A HOW TO MAKE A SUCCESSFUL ESCROW REQUEST*

*SUBSECTION 2.1.B INCOMPLETE ESCROW*

## CHAPTER 3

### SECTION 3.1 ERRORS

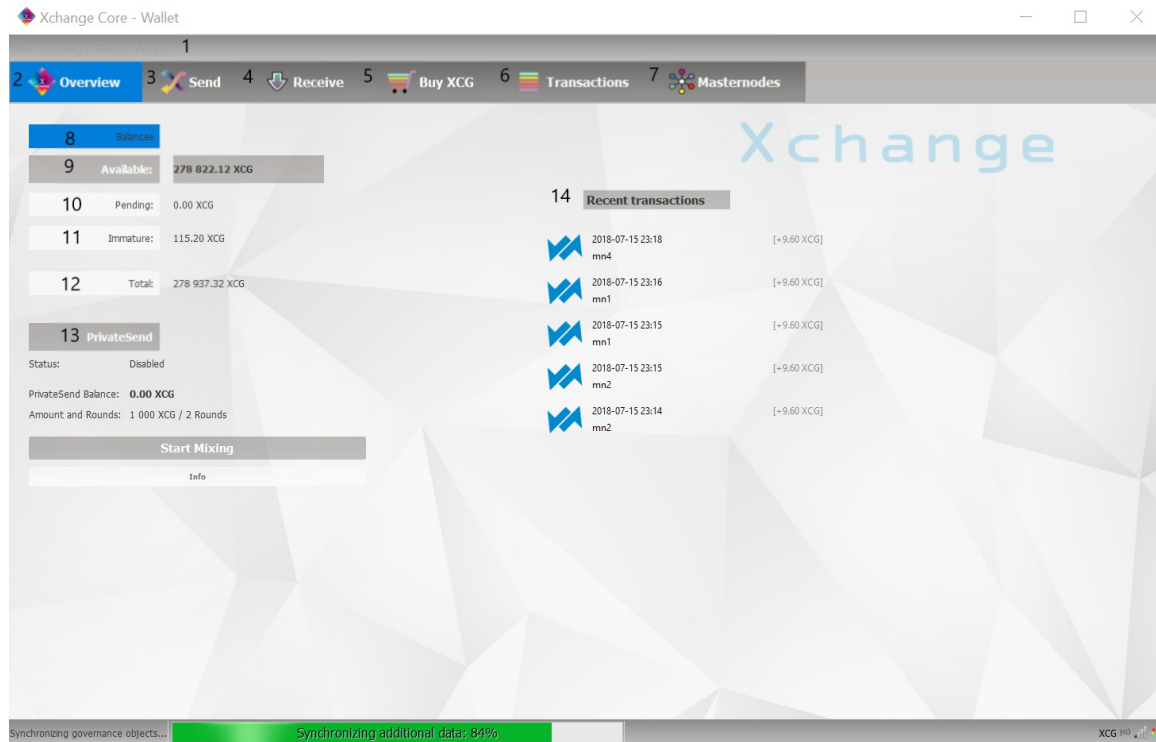
*SUBSECTION 3.1.A ERROR MESSAGES*

# CHAPTER 1

## SECTION 1.1 LAYOUT

### SUBSECTION 1.1.A OVERVIEW PAGE

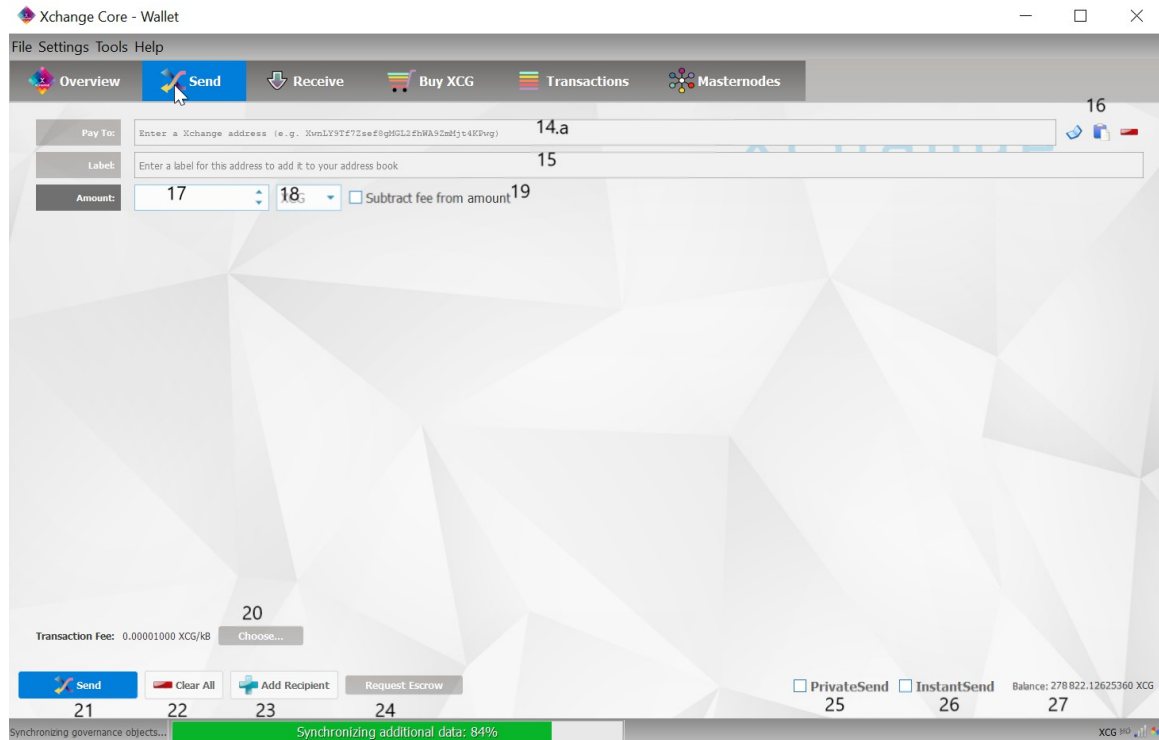
FIG. 1



1. MENU BAR
2. OVERVIEW TAB
3. SEND TAB
4. RECEIVE TAB
5. BUY XCG TAB
6. TRANSACTION HISTORY TAB
7. MASTERNODE PAGE TAB (ENABLED IN WALLET OPTIONS)
8. BALANCE
9. AVAILABLE BALANCE TO USE
10. PENDING BALANCE NOT USABLE
11. IMMATURE BALANCE NOT USABLE
12. TOTAL BALANCE
13. PRIVATE SEND
14. RECENT XCG TRANSACTION OPTIONS

## SUBSECTION 1.1.B SEND PAGE

FIG. 2



14.A. PAYMENT ADDRESS

15. LABEL

16. ADDRESS BOOK, PASTE AND REMOVE

17. AMOUNT OF XCG TO SEND

18. DENOMINATION

19. INCLUDE FEE IN AMOUNT CHECKBOX

20. SET FEE

21. SEND BUTTON

22. CLEAR INPUTS BUTTON

23. ADD RECIPIENT BUTTON

24. REQUEST ESCROW BUTTON

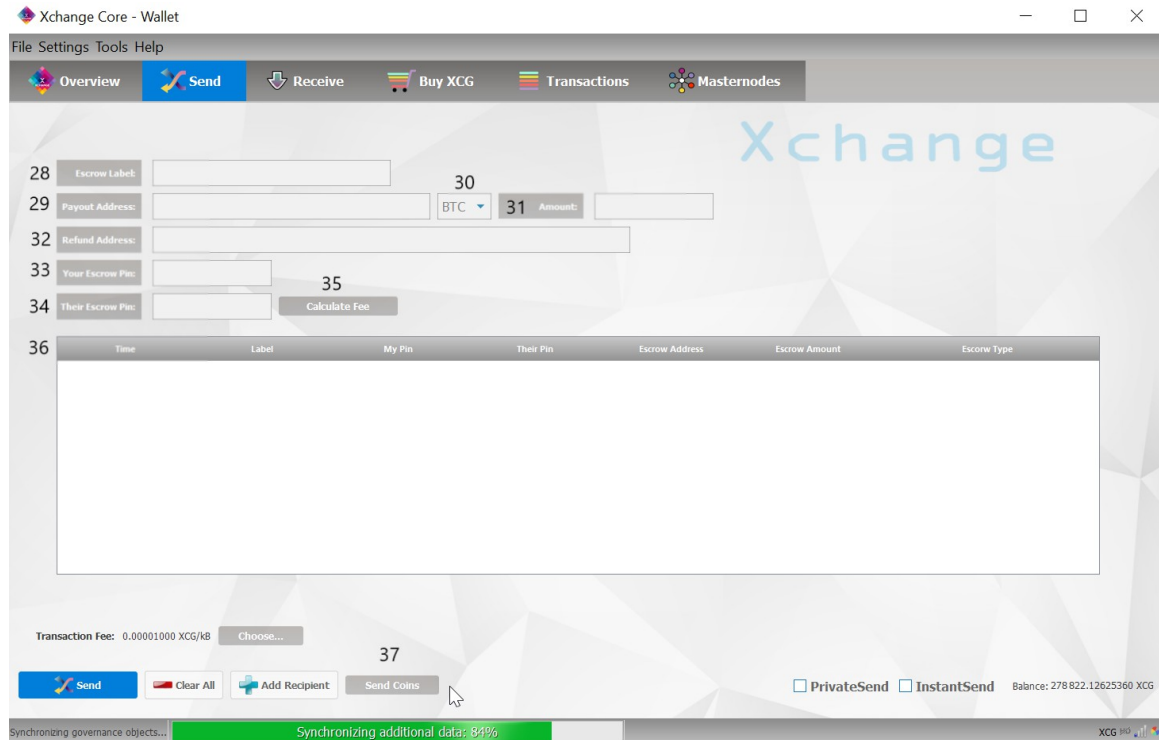
25. ENABLE PRIVATE SEND

26. ENABLE INSTANT SEND

27. BALANCE REMAINING

## SUBSECTION 1.1.C ESCROW PAGE

FIG. 3



28. ESCROW LABEL

29. PAYOUT ADDRESS

30. PAYOUT COIN TYPE

31. AMOUNT TO RECEIVE

32. REFUND ADDRESS

33. AUTO GENERATED PIN

34. INPUT FOR THE OTHER PARTIES PIN

35. THE ESCROW PROCESS BUTTONS

36. HISTORY OF ESCROW

37. SEND COINS BUTTON TO RETURN TO THE SEND COIN PAGE

## CHAPTER 2

### SECTION 2.1 ESCROW USE

#### SUBSECTION 2.1.A: HOW TO MAKE A SUCCESSFUL ESCROW REQUEST

ANY LISTED COIN MAY BE USED FOR THE ESCROW SERVICE, REQUEST LISTINGS AT [XCGTECH.COM](http://XCGTECH.COM)

Step 1: Click the send tab. (fig 1 #3)

Step 2: Click the request escrow button. (fig 2 #24)

Step 3: Gather information of the escrow that will be processed.

Step 4: Enter an escrow name for your escrow label. (fig 3 #28)

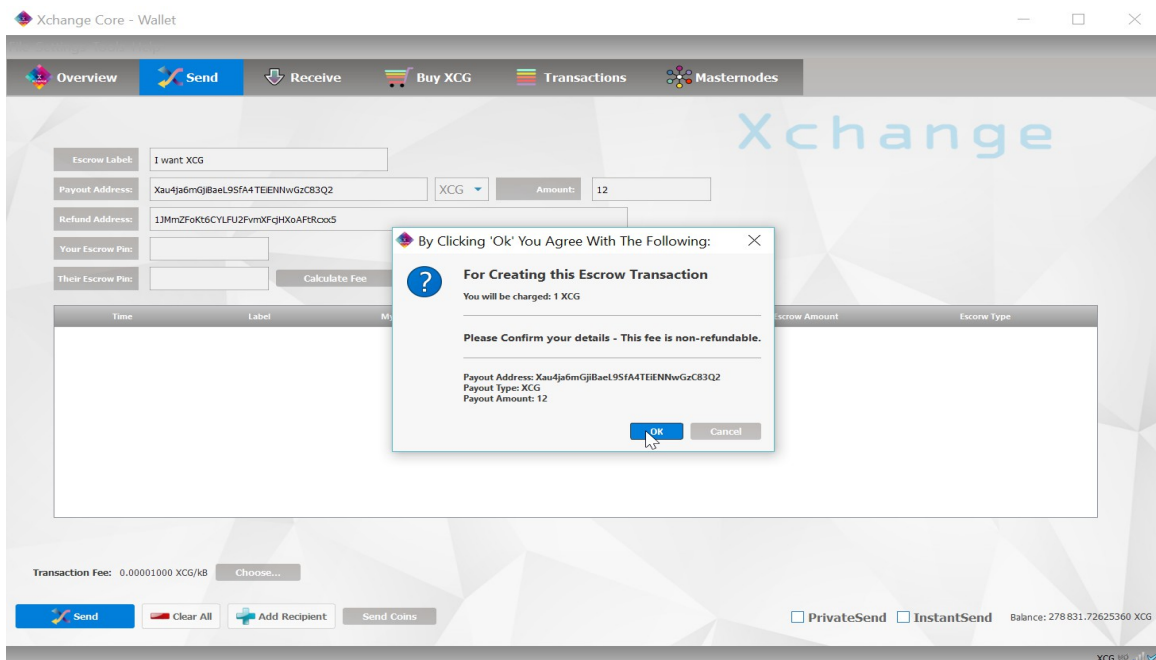
Step 5: Enter the receiving address. (fig 3 #29), coin type. (fig 3 #30), and the amount you wish to receive. (fig 3 #31)

Step 6: Enter the refund address of what coin you will be trading. (fig 3 #32)

- This address is for when the other party does not hold up with the agreement. It will allow the servers to return the paid escrow back. The refund address will not be verified by the servers, you must make sure you input the correct address.

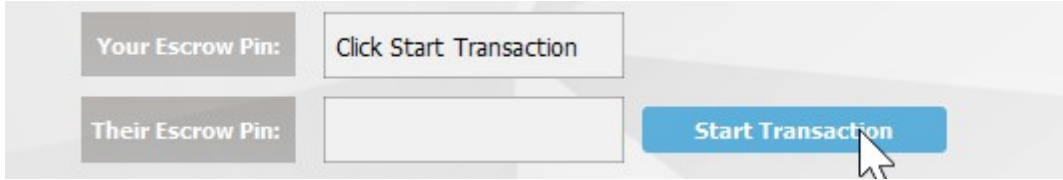
Step 7: Click calculate fee to start the escrow process. (fig 3 #35)

- A fee calculated based on the value will be prompted in a message box.

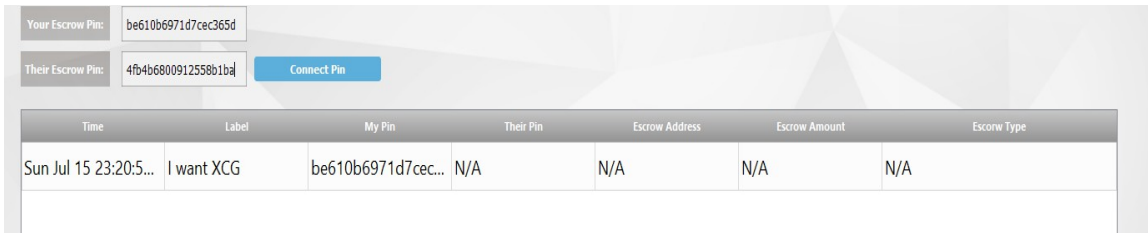


Step 8: Click OK if you agree to the fee and are ready to proceed. If not, click cancel to go back.

Step 9: Click Start Transaction to obtain an auto-generated Pin. (fig 3 #35)



Step 10: Obtain your Pin and notify the other party involved of the Pin. Then insert the other parties Pin into “Their Escrow Pin”. The table (fig 3 #36) will populate information of your inputs.



Time	Label	My Pin	Their Pin	Escrow Address	Escrow Amount	Escrow Type
Sun Jul 15 23:20:5...	I want XCG	be610b6971d7cec...	N/A	N/A	N/A	N/A

Step 11: Click the Connect button (fig 3 #35) to receive the deposit escrow information in the table. (fig 3 #36). At this Point you have 15 minutes to complete the transaction or it will be cancelled and your fee will be forfeit.

After you send the agreed amount to the escrow address you will have completed a successful escrow request.

At this point you are flagged as a non-offender, making it possible to receive a refund on the fee and a return of your funds, if the other party does not proceed with the escrow. If the other party does proceed, then the coin that you request for will be sent based on a minimum confirmation.

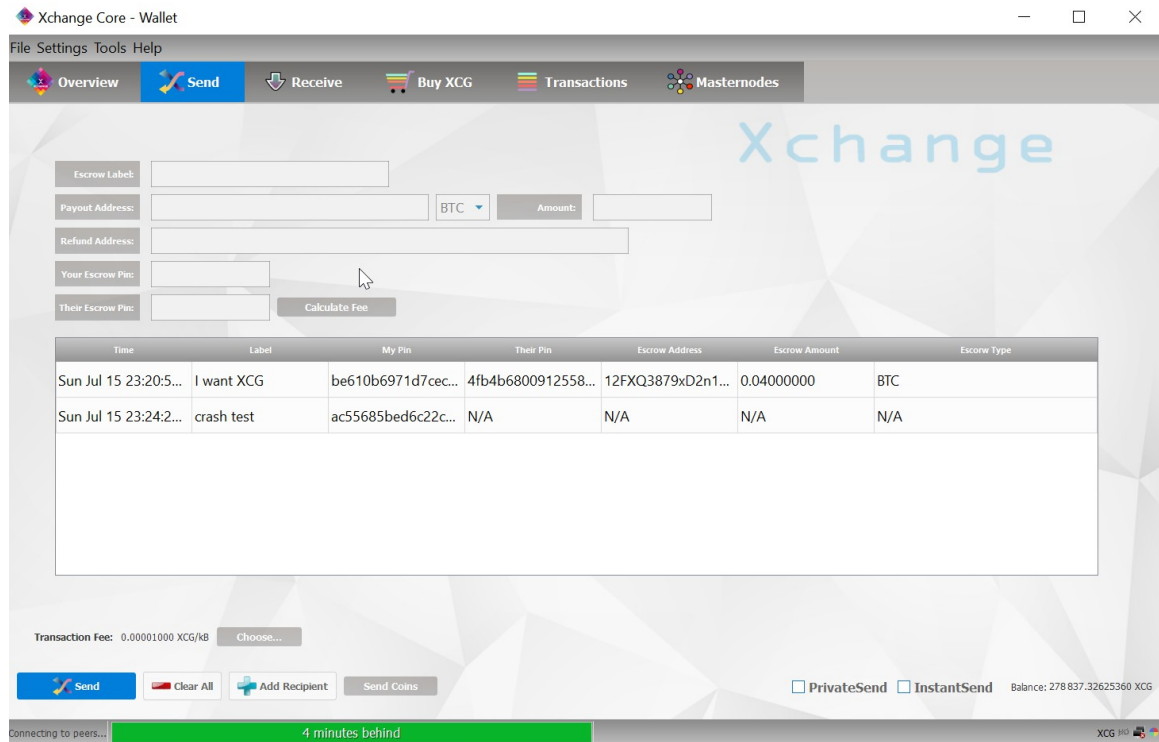
Keep the PIN safe until the transaction shows up in your requested coins wallet.

Thank you for using XCG Xchange Escrow!



## SUBSECTION 2.1.B: INCOMPLETE ESCROW

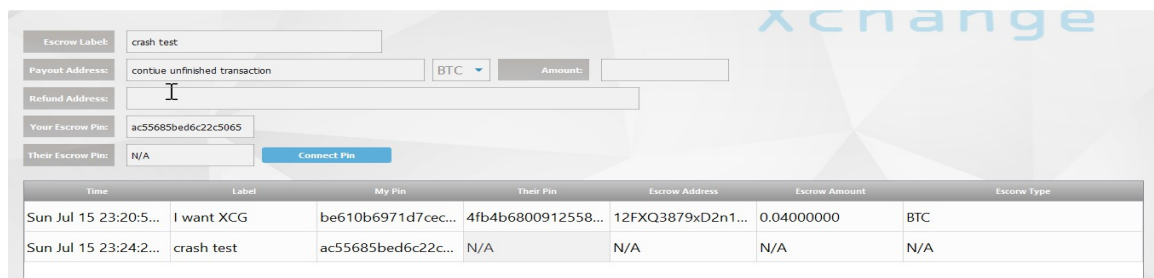
IN THE EVENT OF A SOFTWARE OR SYSTEM FAILURE USERS MAY RETRIEVE THE ESCROW INFORMATION PROVIDED THEY PASSED THE POINT OF CALCULATING THE FEE.



**Procedure to retrieve the incomplete escrow request:**

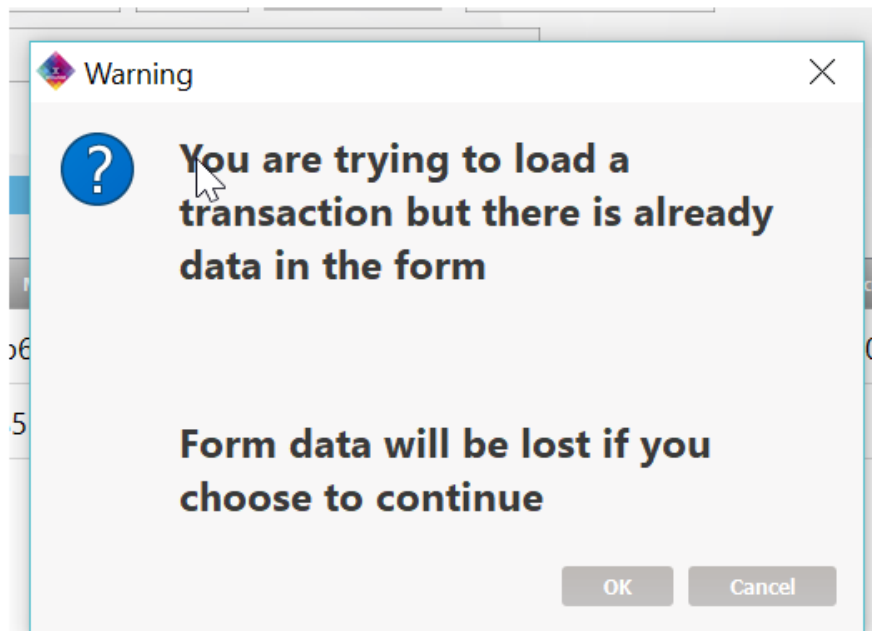
**Step 1.** Start the wallet and return to the escrow page.

**Step 2.** If the escrow request was not completed, The user will notice a N/A in the fields of the escrow table. Double clicking those fields will allow you to enter the pin in the Your Escrow Pin field. (fig 3 #33)



Step 3: Proceed as usual. Note: if you wish to cancel an incomplete escrow and have inputs in the fields a confirmation window will appear.

Note: if you do not wish to continue with an incomplete escrow and have inputs in the fields. A warning will pop if you click the escrow N/A fields in the table.



## CHAPTER 3

### SECTION 3.1 ERRORS

#### SUBSECTION 3.1.A: ERROR MESSAGES

MESSAGE:	REASON:
INVALID PAYOUT AMOUNT	INCORRECT AMOUNT FORMAT
INVALID PAYOUT TYPE	COIN TYPE DOES NOT MATCH ADDRESS TYPE
INVALID PAYOUT ADDRESS	INCORRECT ADDRESS FOR THAT COIN TYPE
INVALID FEE TXID	WRONG WALLET VERSION OR INCOMPATIBLE CHAIN
INVALID FEE AMOUNT	TAMPERED WALLET
INVALID FEE ADDRESS	TAMPERED WALLET
INCOMPATIBLE METHOD	SERVER IS DOWN OR NETWORK ISSUES
INVALID CONNECTING PIN	INCORRECT PIN IN THE THEIR ESCROW FIELD

PLEASE VISIT [XCHANGE AT XCGTECH.COM](https://xchange.at) FOR MORE INFORMATION.

BY USING OUR SOFTWARE YOU ACKNOWLEDGE THAT XCHANGE AND XCG TECH HOLD NO RESPONSIBILITY FOR ANY POTENTIAL LOSS OF FUNDS